

Leaders Make it Happen: From Central Office to the Classroom

**Linda O'Konek, Ed. D.
Professional Development Associate**



Role of Leadership In the Transformation Process

The image features a blue background with several white puzzle pieces scattered across it. A black silhouette of a person is walking from the top right towards the center. The text is placed on or near the puzzle pieces.

Superintendent

**School
Board**

Connect the Pieces

**Central
Office**

Community

Schools

Unions

BROAD PRIZE, 2005



I. Culture Change



Focus

Accountability

Trust

FOCUS

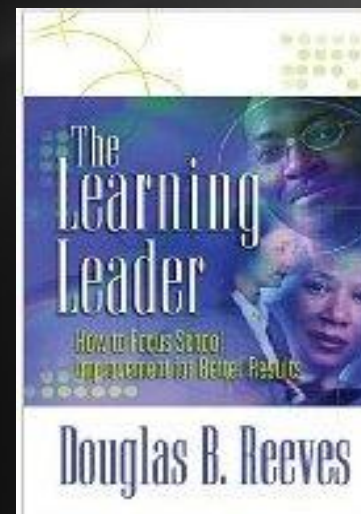
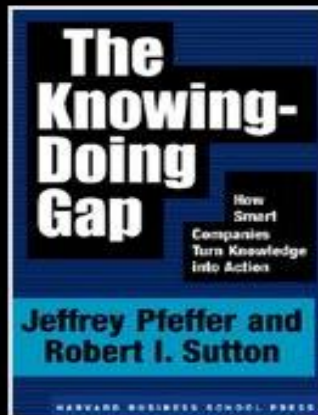
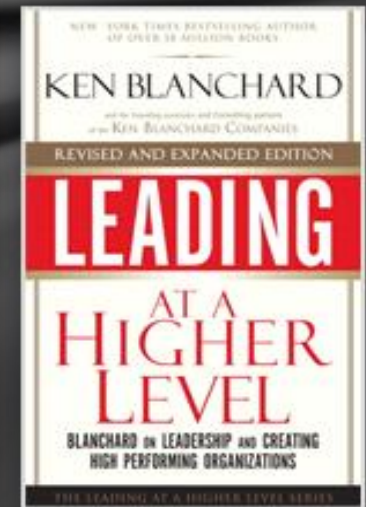
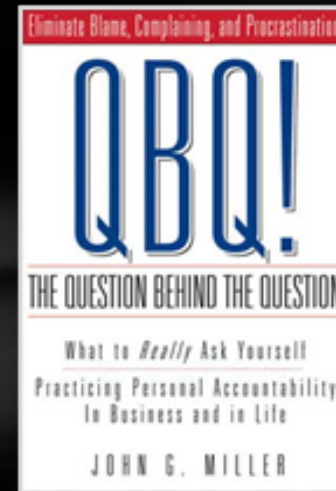
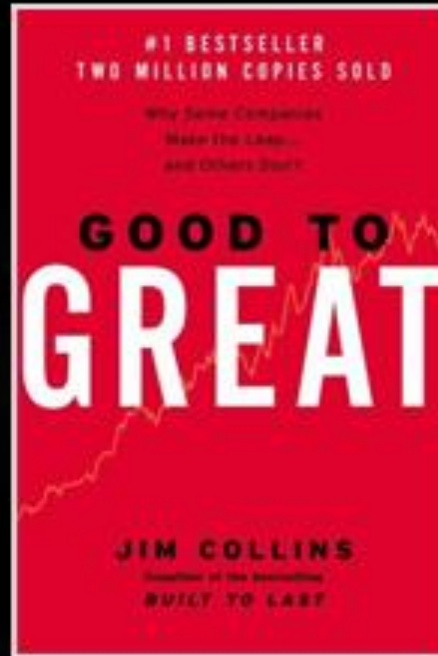
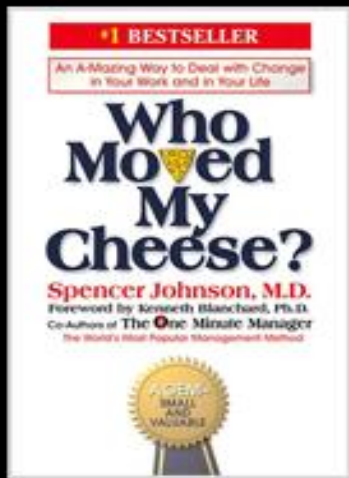


One Goal




**To improve the
quality
of teaching
and learning
for all...and all
means ALL!**

Learning Organization



ACCOUNTABILITY

A magnifying glass with a wooden handle and a metal rim is positioned over a document. The document contains faint, illegible text. Overlaid on the magnifying glass is the text "No Excuses" in a bold, black, sans-serif font.

**No
Excuses**

WINDOW VS. MIRROR



Improving Student Performance



TRUST



Building Relationships



Change Champions

A lit torch with a bright flame, set against a dark red background. The torch is positioned on the right side of the slide, with the flame being the brightest element. The background is a gradient of dark red to black.

Executive Directors

Directors of Support

Principals

Teachers

Unions

TEAMWORK



II. Data Driven Decision Making





**The use of
Data Teams is
a powerful
strategy that
makes school
improvement
plans come
to life.**

A man in a dark pinstriped suit jacket and a woman in a white business shirt and glasses are leaning over a table, smiling and looking at documents. The man is holding a pen. The background is a bright office setting with a computer monitor and a window.

Teacher Collaboration

III. Build Capacity

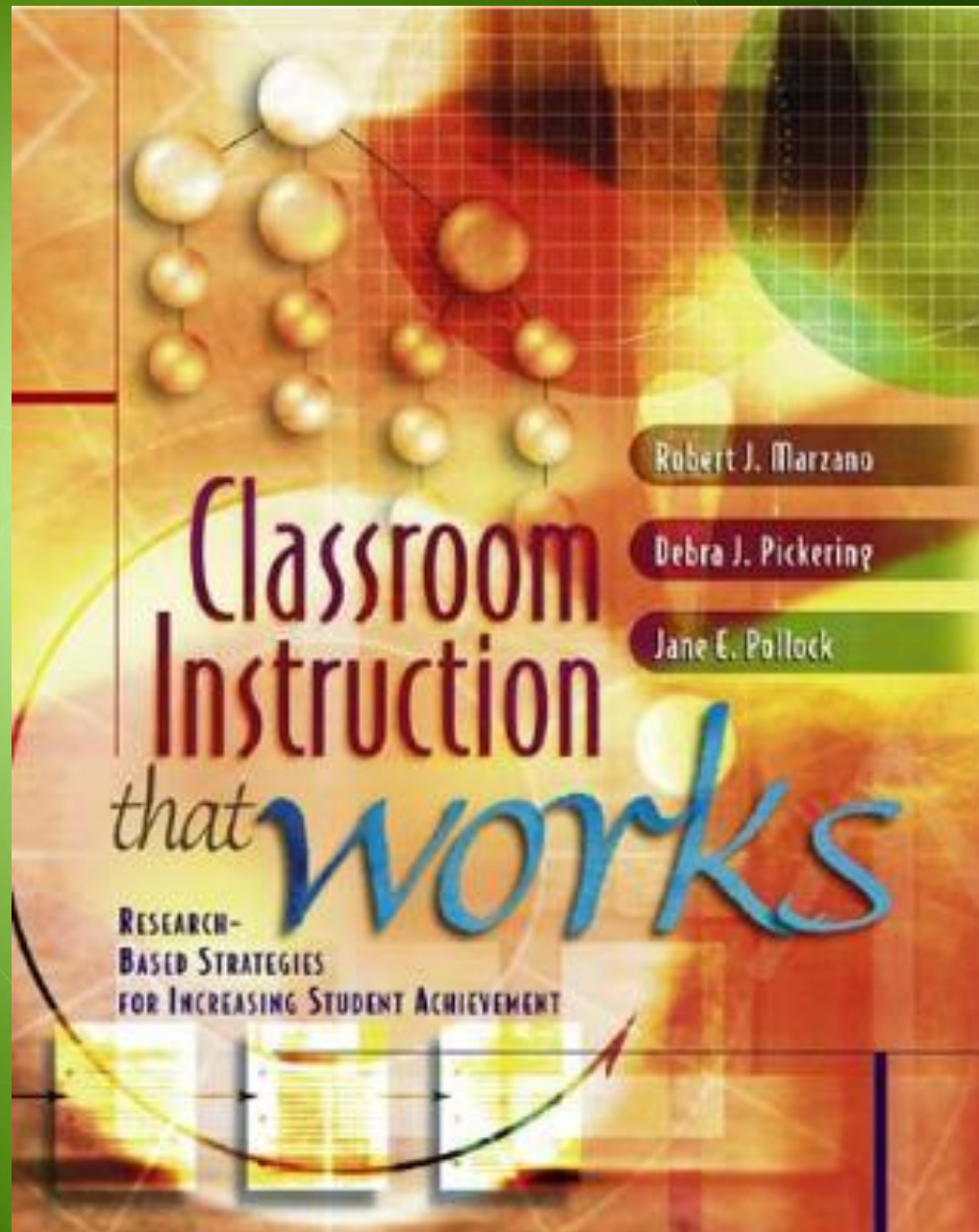


High Expectations + High Support



Teacher Capacity





Robert J. Marzano

Debra J. Pickering

Jane E. Pollock

Classroom Instruction

that *works*

RESEARCH-
BASED STRATEGIES
FOR INCREASING STUDENT ACHIEVEMENT

Leader Capacity

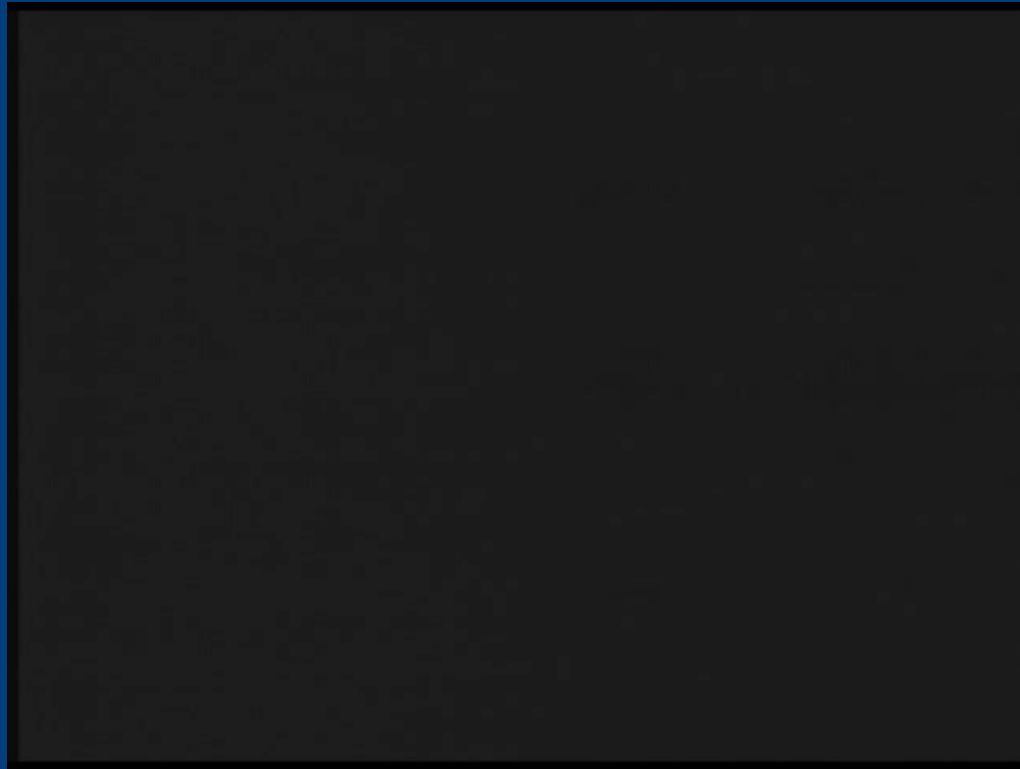


Knowing Doing Gap

Every organization,
every person,
suffers to some
degree from a gap
between
intention and action.*



Blue Ribbon School



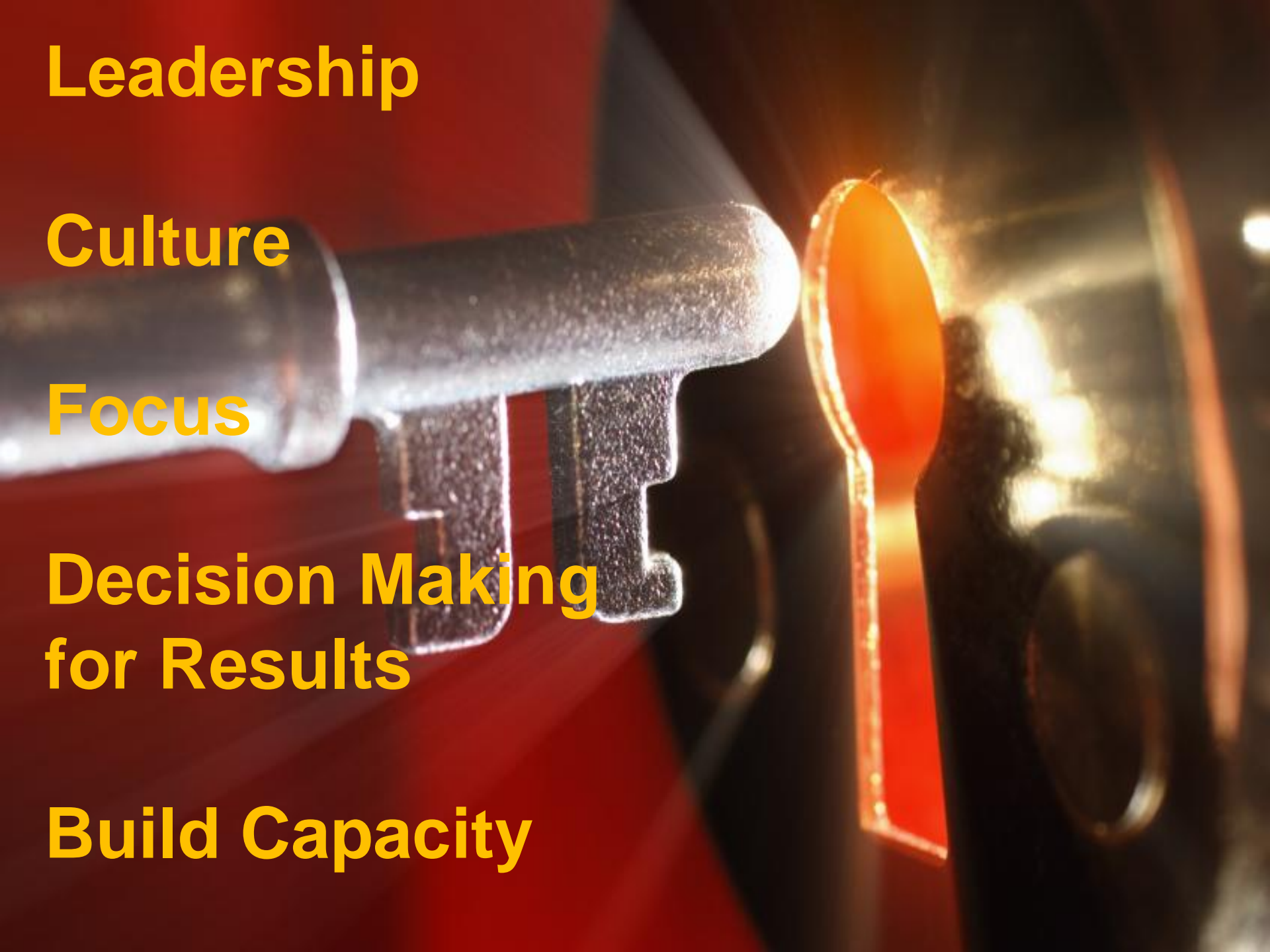
Leadership

Culture

Focus

**Decision Making
for Results**

Build Capacity



LEADERSHIP

It **IS**
all about
YOU!



Questions and Discussion

Linda O'Konek, Ed. D.

The Leadership and Learning Center

1.303.504.9312, Ext.522

lokonek@LeadandLearn.com

LeadandLearn.com