

Changing Face of REMC 5

The circulation of various media resources to teachers for classroom use has always been one of the most visible forms of service provided by REMC to its member schools. As digital resources become more accessible to teachers and students, the physical collection is being phased out and teachers are learning to effectively use the digital resources available.

Because of the shift from physical to digital resources, the REMC interschool mail courier service was reduced to three days per week in 2011-2012 and is currently operating a two days per week schedule. Savings recognized from this reduction helps to support digital resources, such as Discovery Education Streaming.

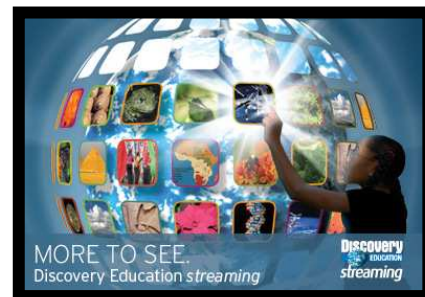


REMC 5 circulated 742 items in the 2011-2012 school year.

Discovery Education Streaming

All area schools have access to digital delivery of media through Discovery Education's Streaming service. DE Streaming provides high-quality educational content aligned to standards. Teachers can stream video on demand or download items to create a library of lesson-enhancing resources. REMC 5 provides administrative support and training in using DE Streaming.

Without REMC membership, each school building would pay over \$2,300 for a one-year subscription to 8,800 videos, 60,000 video clips and numerous classroom resources available through DE Streaming. With REMC membership, the statewide-negotiated price for 2011-2012 was \$605 per building. REMC 5 purchases the DE Streaming license for all member buildings, for a regional savings of \$33,880.

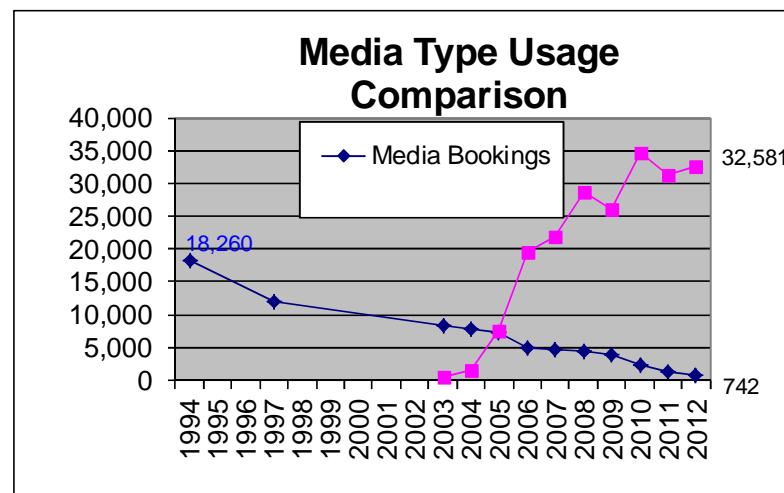


DE Streaming 2011-2012

Video Streams & Downloads.....	30,476
Other Resources	2,055
TOTAL.....	32,531

"You can teach a student a lesson for a day; but if you can teach him to learn by creating curiosity, he will continue the learning process as long as he lives."

Clay P. Bedford



What is Moodle?

Moodle is a Course Management System (CMS), also known as a Learning Management System (LMS) or a Virtual Learning Environment (VLE).

REMC 5 is a partner with other ISDs and REMCs in the greater central Michigan area to provide Moodle, a comprehensive Learning Management System. Administrative support and training for Moodle is provided by REMC.

REMC pays all support fees associated with Moodle so that this resource is free to member schools.

Gratiot-Isabella RESD.....	30
Alma.....	446
Ashley	0
Beal City.....	50
Breckenridge.....	206
Fulton.....	192
Ithaca	5
Mt. Pleasant.....	597
St. Louis	319
Shepherd	574
Clare-Gladwin RESD.....	163
Beaverton	168
Clare.....	431
Farwell.....	717
Gladwin.....	262
Harrison	62
TOTAL	4245

Statewide Resources for Educators

<http://www.remc.org/projects>

21 Things

The 21 Things 4 Students provides a virtual classroom where students in grades 6-12 learn about and demonstrate basic technology skills.

MI Streamnet

Schools may access live or archived videoconferences through the REMC MI Streamnet service.

Blended Learning in the Classroom

This is a job-embedded professional development program to help teachers become successful in their transition to a blended model for teaching.

Connected Educator Series

This video series showcases how master teachers from across Michigan are effectively and easily integrating technology into lessons.



Featured in the REMC Connected Educator Series, Ben Rimes from Mattawan Schools explains how he creates video story problems to tie the real world into his classroom.

REMC SAVE Bid Project

REMC 5 participates in a statewide program designed to provide school districts with cooperative buying power on a statewide bid of supplies and equipment. Estimated combined savings for all REMC 5 schools in 2011-2012 was \$856,198.

